



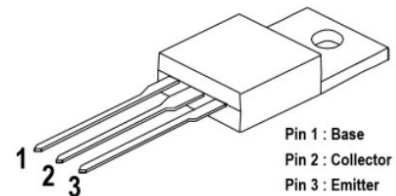
SSCN1071GT4

Silicon NPN Darlington Power Transistor

➤ Description

- Low Collector Saturation Voltage
- High DC Current Gain
- High Reliability

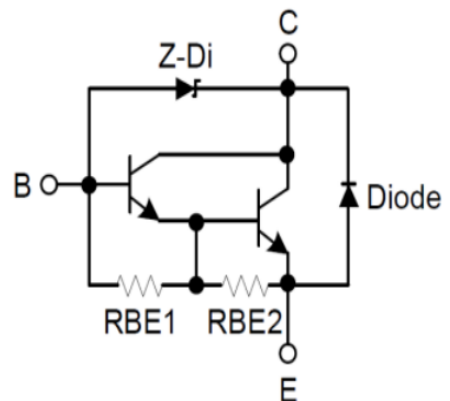
➤ Pin Configuration



TO220-3L (Top View)

➤ Applications

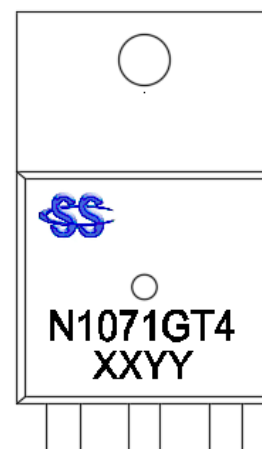
- Audio power amplifiers
- Relay & solenoid drivers
- Motor controls
- General purpose power amplifiers
- Including zener diode



Circuit Diagram

➤ Ordering Information

Device	Package	Shipping
SSCN1071GT4	TO220-3L	50/Tube



Marking

(XYYY: Internal Traceability Code)



➤ **Absolute Maximum Ratings (T_J=25°C unless otherwise noted)**

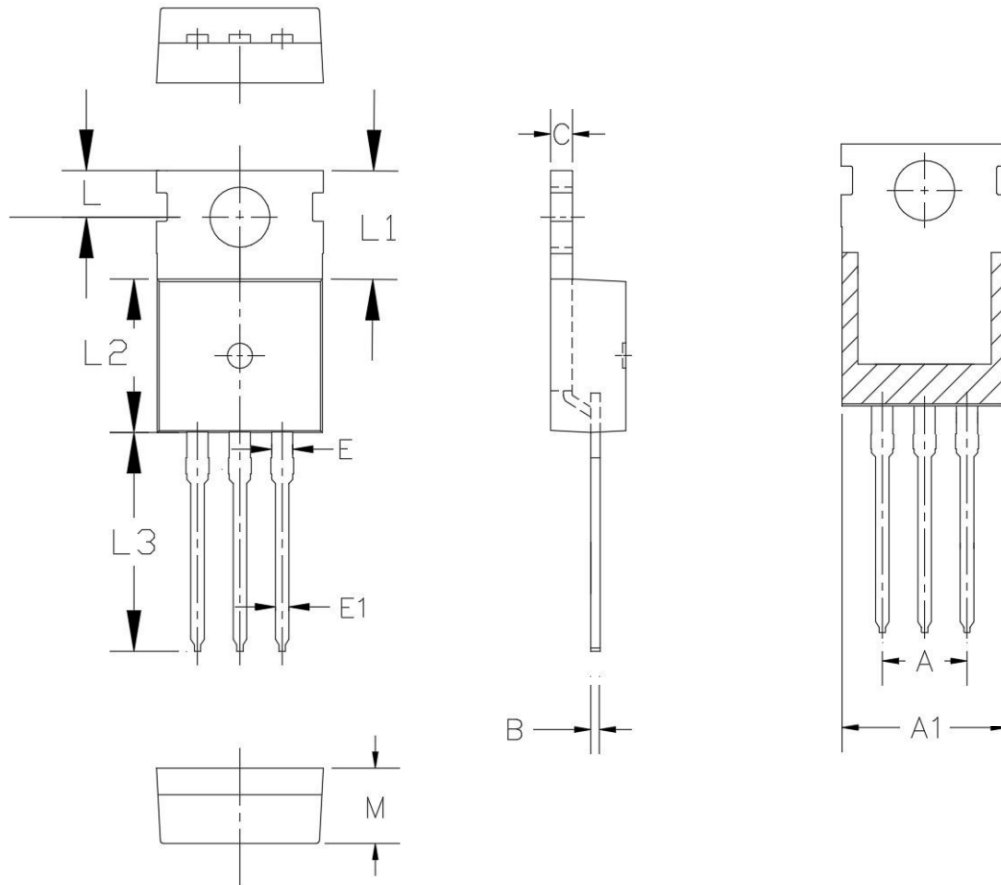
Symbol	Parameter	Ratings	Unit
V _{CBO}	Collector-Base Voltage	300	V
V _{CEO}	Collector- Emitter Voltage	300	V
V _{EBO}	Emitter-Base Voltage	6	V
I _C	Collector Current-Continuous	6	A
I _B	Base Current-Continuous	2.5	A
P _C	Power Dissipation, T _J =25°C	40	W
T _{STG} /T _J	Junction & Storage Temperature Range	-55 to 150	°C

➤ **Electrical Characteristics (T_J=25°C unless otherwise noted)**

Parameter	Symbol	Test Conditions	Min.	Typ.	Max.	Unit
Collector-Base Breakdown Voltage	BV _{CBO}	I _C = 1mA	300			V
Collector-emitter Breakdown Voltage	BV _{CEO}	I _C = 1mA	300			V
Emitter -Base Breakdown Voltage	BV _{EBO}	I _E = 150mA	6			V
Collector Cutoff Current	I _{CBO}	V _{CB} = 300V			100	uA
Emitter Cutoff Current	I _{EBO}	V _{EB} = 6V, I _C =0			150	mA
DC Current Gain	h _{FE}	V _{CE} = 10V, I _C = 5A	300			
Collector-Emitter Saturation Voltage	V _{CE(sat)}	I _C = 4A, I _B = 15mA			1.5	V
Base-Emitter Saturation Voltage	V _{BE(sat)}	I _C = 4A, I _B = 15mA			2.0	V

➤ Information

TO220-3L



Symbol	MILL IMETER		
	Min	Nom	Max
A	5.08 BSC		
A1	9.00	10.00	11.00
B	0.33	--	0.65
C	1.20	--	1.40
E	1.17	--	1.37
E1	0.60	--	1.10
L	2.50	--	3.00
L1	6.3	6.5	6.7
L2	8.95	--	9.75
L3	12.88	--	13.40
M	4.30	--	4.70



DISCLAIMER

SSCSEMI RESERVES THE RIGHT TO MAKE CHANGES WITHOUT FURTHER NOTICE TO ANY PRODUCTS HEREIN TO IMPROVE RELIABILITY, FUNCTION OR DESIGN. SSCSEMI DOES NOT ASSUME ANY LIABILITY ARISING OUT OF THE APPLICATION OR USE OF ANY PRODUCT OR CIRCUIT DESCRIBED HEREIN; NEITHER DOES IT CONVEY ANY LICENCE UNDER ITS PATENT RIGHTS, NOR THE RIGHTS OF OTHERS.

THE GRAPHS PROVIDED IN THIS DOCUMENT ARE STATISTICAL SUMMARIES BASED ON A LIMITED NUMBER OF SAMPLES AND ARE PROVIDED FOR INFORMATIONAL PURPOSE ONLY. THE PERFORMANCE CHARACTERISTICS LISTED IN THEM ARE NOT TESTED OR GUARANTEED. IN SOME GRAPHS, THE DATA PRESENTED MAY BE OUTSIDE THE SPECIFIED OPERATING RANGE (E.G. OUTSIDE SPECIFIED POWER SUPPLY RANGE) AND THEREFORE OUTSIDE THE WARRANTED RANGE.

OUR PRODUCT SPECIFICATIONS ARE ONLY VALID IF OBTAINED THROUGH THE COMPANY'S OFFICIAL WEBSITE, CRM SYSTEM, OR OUR SALES PERSONNEL CHANNELS. IF CHANGES OR SPECIAL VERSIONS ARE INVOLVED, THEY MUST BE STAMPED WITH A QUALITY SEAL AND MARKED WITH A SPECIAL VERSION NUMBER TO BE VALID.